



ABD KASHA
GAZELONG

Welcome Note

Life began a very long time ago, when the Earth was young and full of raw energy. From the oceans and the warmth of the planet, tiny bits of matter slowly came together in just the right way to spark the first living things. These were simple forms, but over time they grew, changed, and multiplied, eventually giving rise to the wide variety of plants, animals, and people we know today. It was the start of a long, mysterious journey from something very small into the rich, living world around us.

If we gaze through history, life as we know it has gone through a lot of cycles, some good, some bad. Some dark, some beautiful. But it is the process of constant adaptation that kept us going. Adapting to the unknown, gazing through the unknown.

Kalim Bechara

Biography

Abd Kasha is a multidisciplinary artist whose practice spans painting, sculpture, and installation, each medium serving as an inquiry into memory, displacement, and the shifting terrain of human identity. Born in Syria and now based in Beirut, his work resists fixed narratives, offering instead spaces of reflection where the personal and collective intertwine.

Kasha's career unfolds as a continuous journey, each exhibition carrying forward unresolved questions while opening onto new territories. From revisiting the echoes of migration in *Safar Berlek* to unsettling perception in *Folly Below*, his practice is defined by a refusal of closure. Rather than offering answers, his work invites sustained contemplation, where ambiguity becomes fertile ground for awakening and discovery. Exhibiting across Syria, Lebanon, Jordan, Egypt, the United Arab Emirates, and France, Kasha has forged a practice that transcends borders while remaining rooted in lived histories. His works are held in private collections in Beirut, Damascus, Amman, Dubai, Paris, London, and Berlin, as well as in the Sharjah Art Foundation.

Gaze Long...

If we gaze long enough, the things around us begin to move.

Long gazing is not a pastime for the soul, but its awakening. Things do not move around us unless they first move within us.

Through prolonged contemplation, clamor reveals itself as a thirst for life, chaos as a search for balance, and irony as a mirror of our desire to rise. Even indulgence in desires is nothing but a mysterious attempt at survival—an indication that the soul still yearns for transcendence.

The world never stands still; it always pushes us toward awakening. And when we awaken, we realize that everything dancing around us had been waiting for us to see it. For absurdity is never pure nonsense, but an ancient and intricate order—one that reveals itself only to those who dare to gaze long enough.





GAZE LONG

200x600 cm

Acrylic on canvas

\$32000





FORESIGHT

165x210x90 cm

Mixed Media

\$17000





GAZE LONG SERIES

160x240 cm

Acrylic on canvas

\$12800







THE WAY BACK IS CLOSED I

150x201 cm

Acrylic on canvas

\$11500





**DON'T WORRY
EVERYTHING IS FINE
SERIES**

190x156 cm

Acrylic on canvas

\$9800





**DON'T WORRY
EVERYTHING IS FINE
SERIES**

100x111 cm
Acrylic on canvas
\$4000





GAZE LONG SERIES

78x150 cm

Acrylic on canvas

\$4200





**DON'T WORRY
EVERYTHING IS FINE
SERIES**

130x150 cm

Acrylic on canvas

\$6500





**WHISPER IN THE STORM
SERIES**

140x150 cm

Acrylic on canvas

\$7200





**DON'T WORRY
EVERYTHING IS FINE
SERIES**

115x145 cm

Acrylic on canvas

\$6200







**DON'T WORRY
EVERYTHING IS FINE
SERIES**

120x140 cm

Acrylic on canvas

\$6200





**DON'T WORRY
EVERYTHING IS FINE
SERIES**

120x138 cm

Acrylic on canvas

\$6200





DAY OF ARRIVAL

140x120 cm

Acrylic on canvas

\$6200





**DON'T WORRY
EVERYTHING IS FINE
SERIES**

140x100 cm

Acrylic on canvas

\$5000





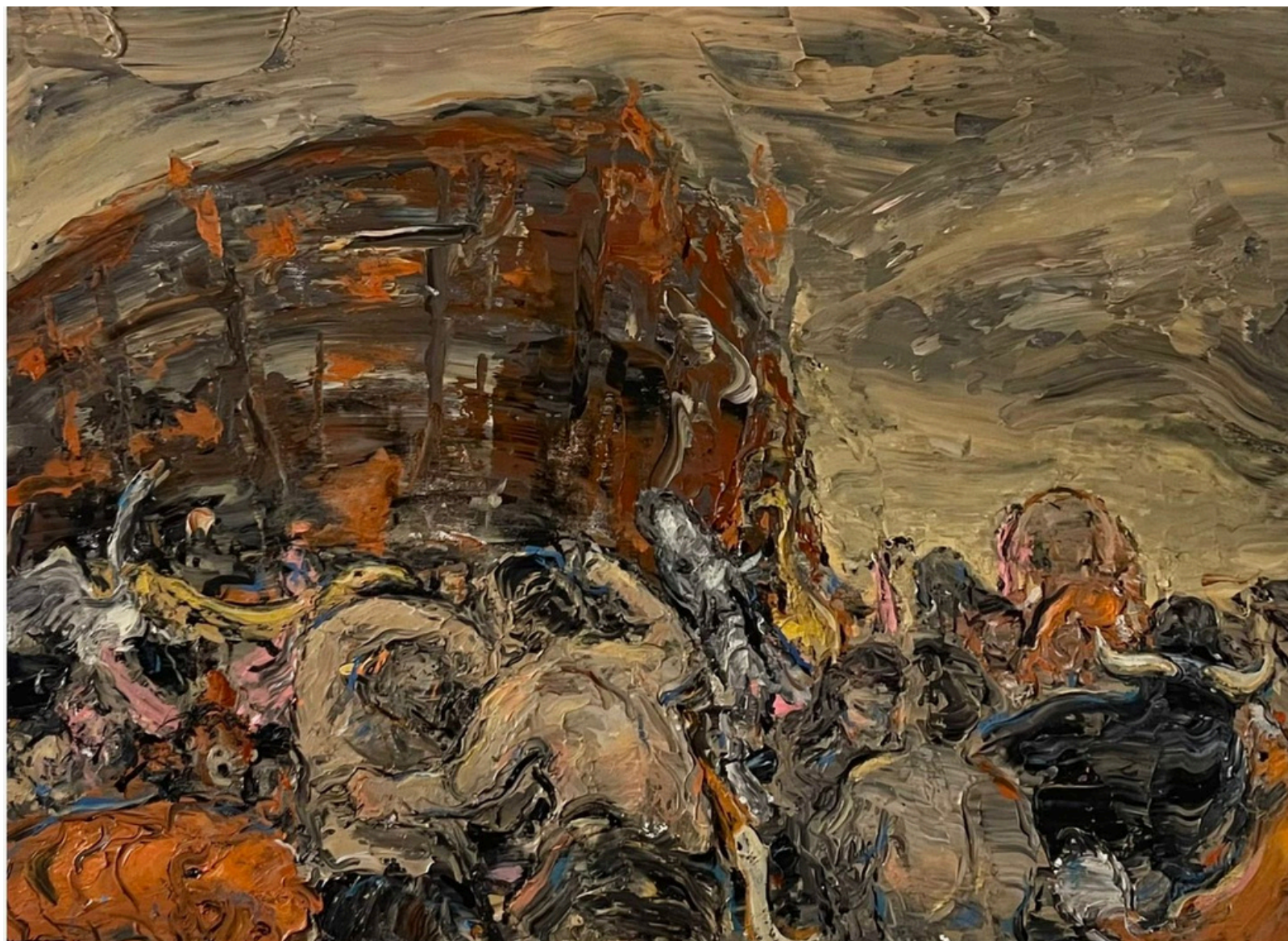
GAZE LONG SERIES

80x120 cm

Acrylic on canvas

\$3800





GAZE LONG SERIES

54x70 cm

Acrylic on canvas

\$2000



GAZE LONG SERIES



46x60 cm
Acrylic on canvas
\$1750 each





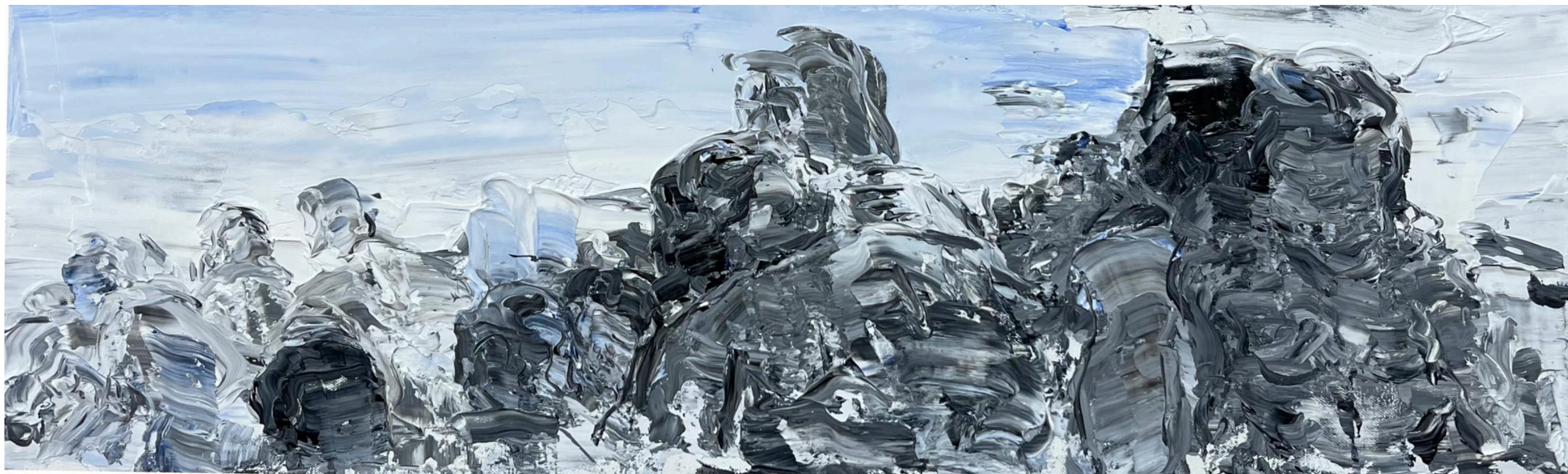
62x62 cm
Acrylic on canvas
\$2200

GAZE LONG SERIES



50x70 cm
Acrylic on canvas
\$2000





GAZE LONG SERIES

28x88 cm

Acrylic on canvas

\$1750





GAZE LONG SERIES

25x49 cm

Acrylic on canvas

\$1500







THE FLOOD IS OVER

46x60 cm

Acrylic on canvas

\$1750





THE WAY BACK IS CLOSED II

40x60 cm

Acrylic on canvas

\$1750





UNTITLED

63x102 cm

Acrylic on canvas

\$2900



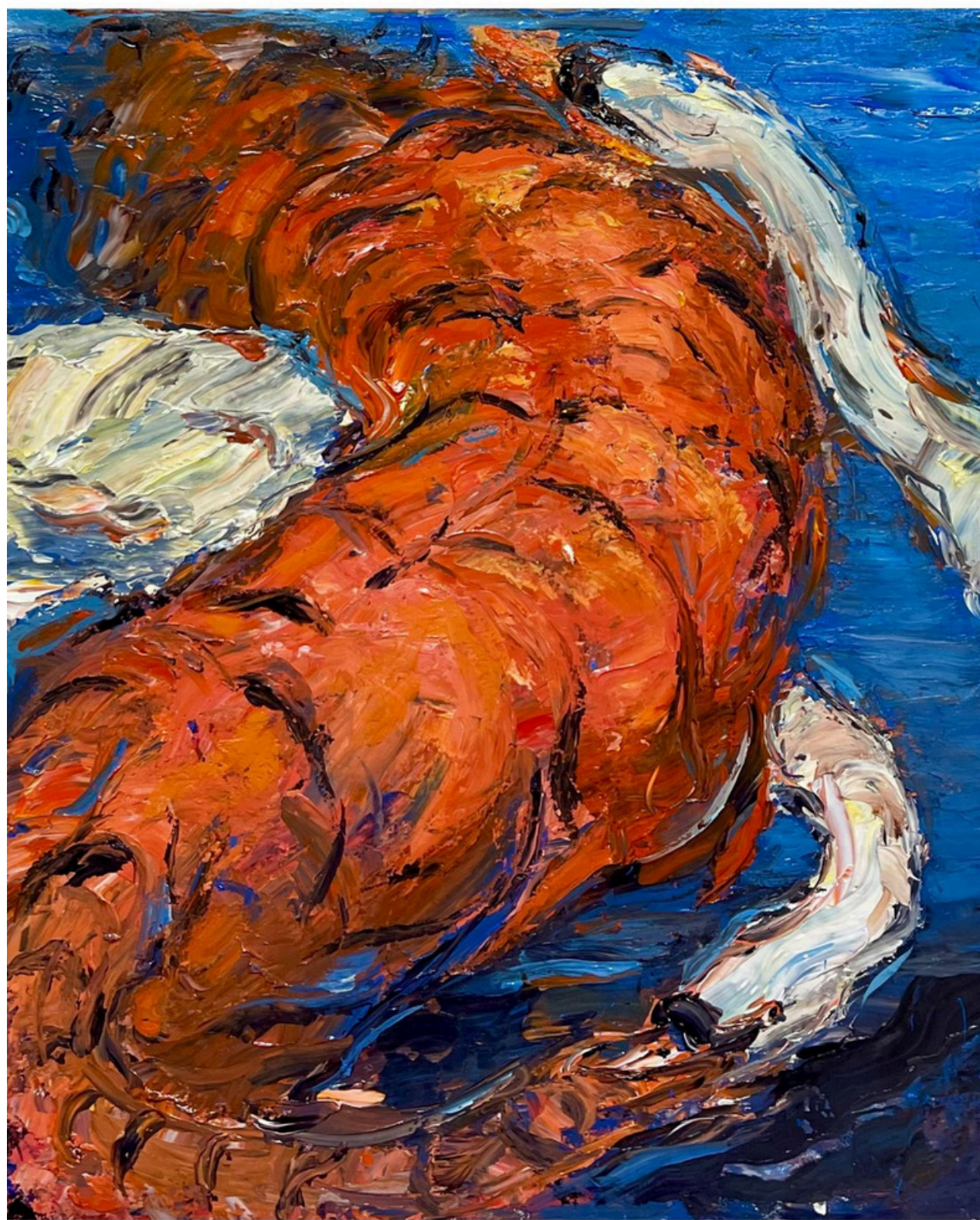
UNTITLED

70x49 cm

Acrylic on canvas

\$2000





**DON'T WORRY
EVERYTHING IS FINE
SERIES**

65x54 cm

Acrylic on canvas

\$1900







**DON'T WORRY
EVERYTHING IS FINE
SERIES**

62x38 cm

Acrylic on canvas

\$1750





**WHISPER IN THE STORM
SERIES**

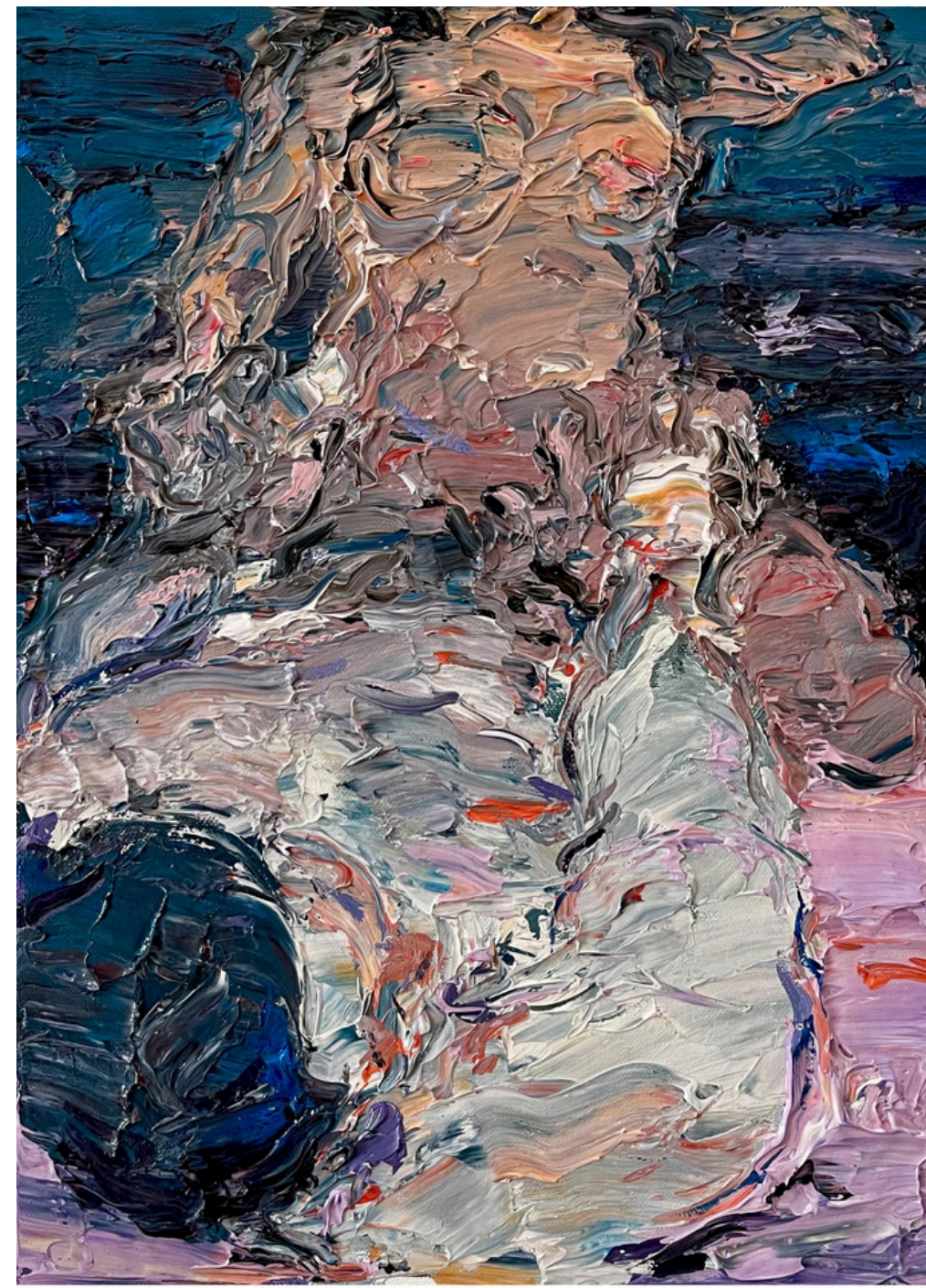
60x80 cm

Acrylic on canvas

\$2500







WHISPER IN THE STORM SERIES

40x30 cm

Acrylic on canvas

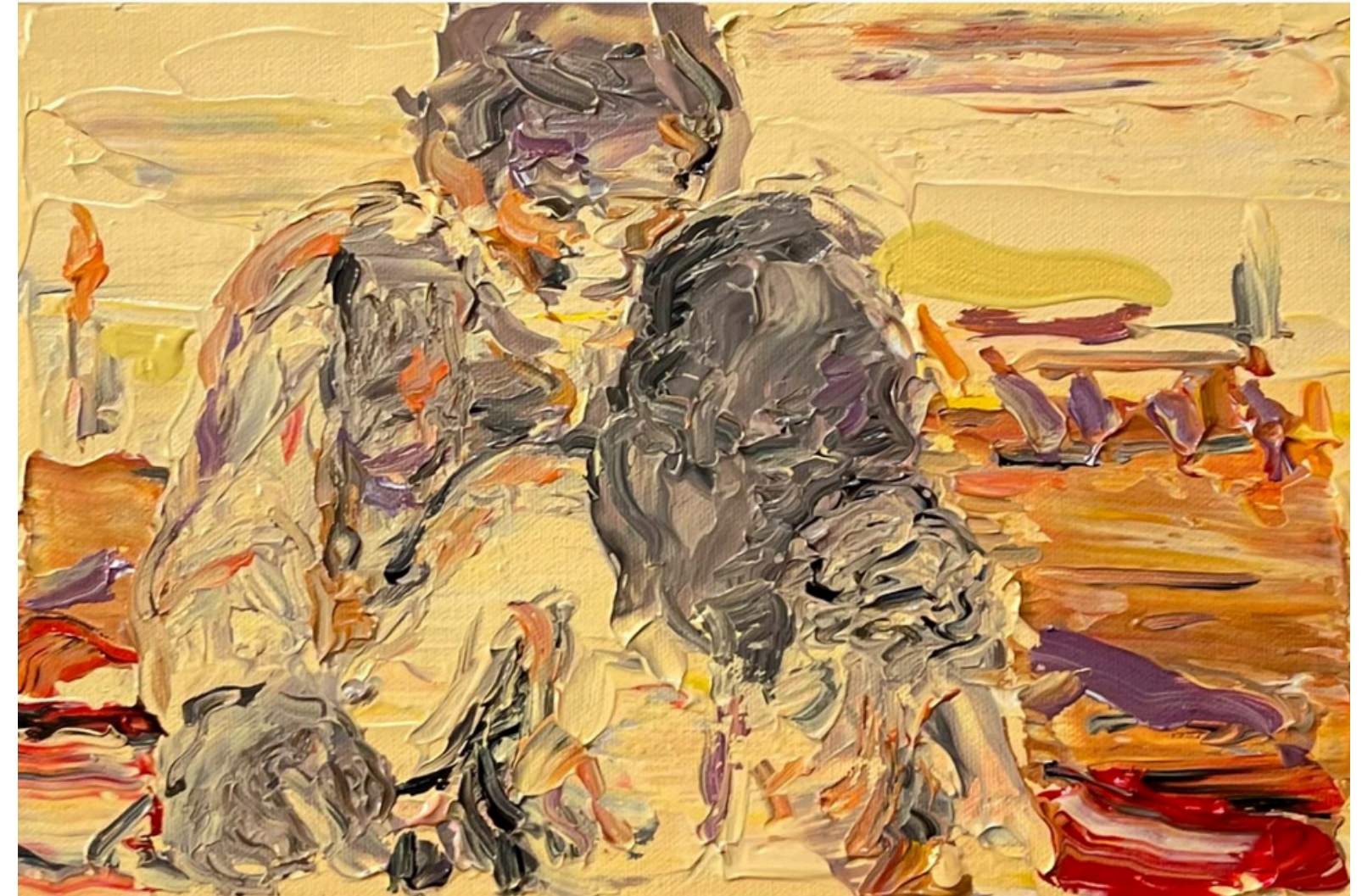
\$1200 each





40x30 cm
Acrylic on canvas
\$1200

WHISPER IN THE STORM SERIES



20x30 cm
Acrylic on canvas
\$1000



GAZE LONG SERIES



57x76 cm

Acrylic on cardboard

\$1250 each



**DON'T WORRY
EVERYTHING IS FINE
SERIES**

76x57 cm

Acrylic on cardboard

\$1250



GAZE LONG SERIES



57x76 cm

Acrylic on cardboard

\$1250 each





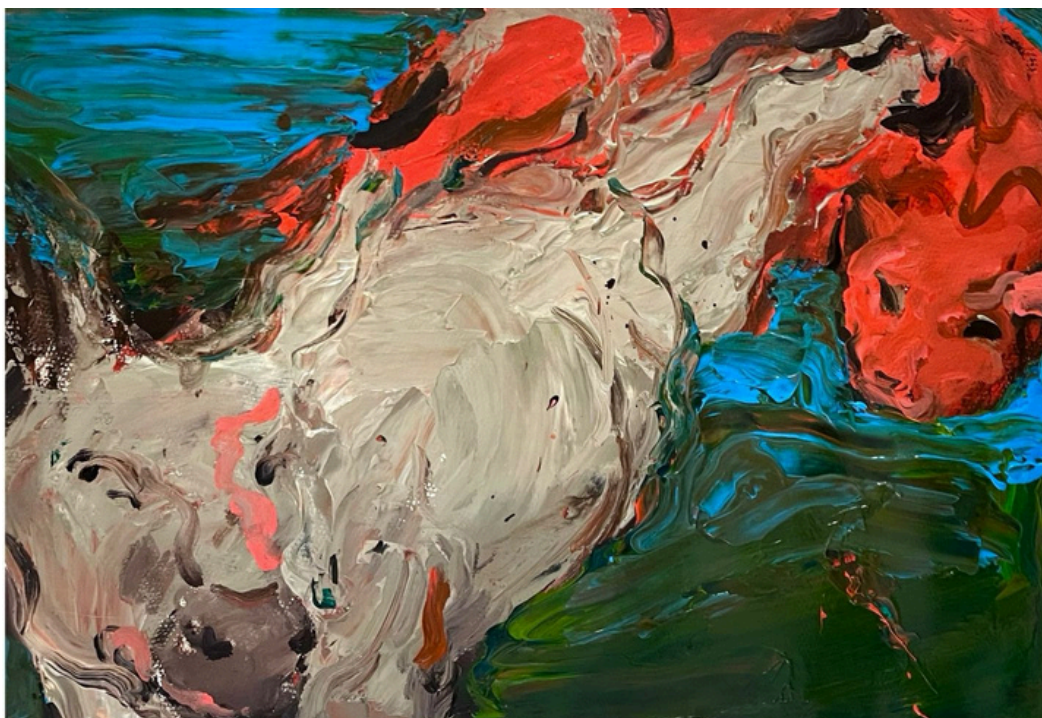
GAZE LONG SERIES

50x65 cm

Acrylic on canson

\$1250



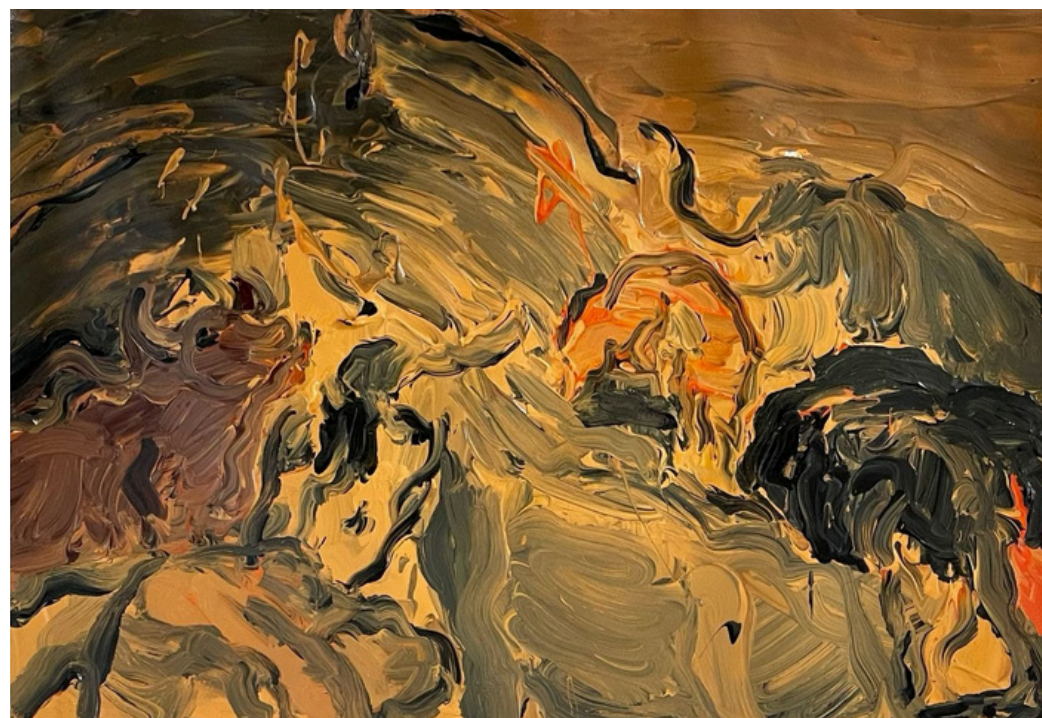


**DON'T WORRY
EVERYTHING IS FINE
SERIES**

38x53 cm

Acrylic on cardboard

\$1000





WHISPER IN THE STORM
SERIES

38x58 cm

Acrylic on cardboard

\$1000



THE WAY BACK IS CLOSED

38x58 cm

Acrylic on cardboard

\$1000







UNTITLED

21x30 cm

Pencil on paper

\$250 each





UNTITLED

30x21 cm

Pencil on paper

\$250



UNTITLED

21x30 cm

Pencil on paper

\$250



UNTITLED

21x30 cm

Pencil on paper

\$250





UNTITLED

30x21 cm

Pencil on paper

\$250



UNTITLED

21x30 cm

Pencil on paper

\$250





UNTITLED

16x17.5 cm

Pencil on paper

\$250





UNTITLED

30x21 cm

Pencil on paper

\$250 each





UNTITLED

26.5x38 cm

Watercolor on canson

\$400





WHISPER IN THE STORM SERIES

25x35 cm

Watercolor on canson

\$400





كليم بشارة
KALIM BECHARA
ART GALLERY

Contact us:

info@kalimbecharaartgallery.com

+961 70 672 777

Noor Garden 1 building - Omar Daouk street - Downtown - Lebanon